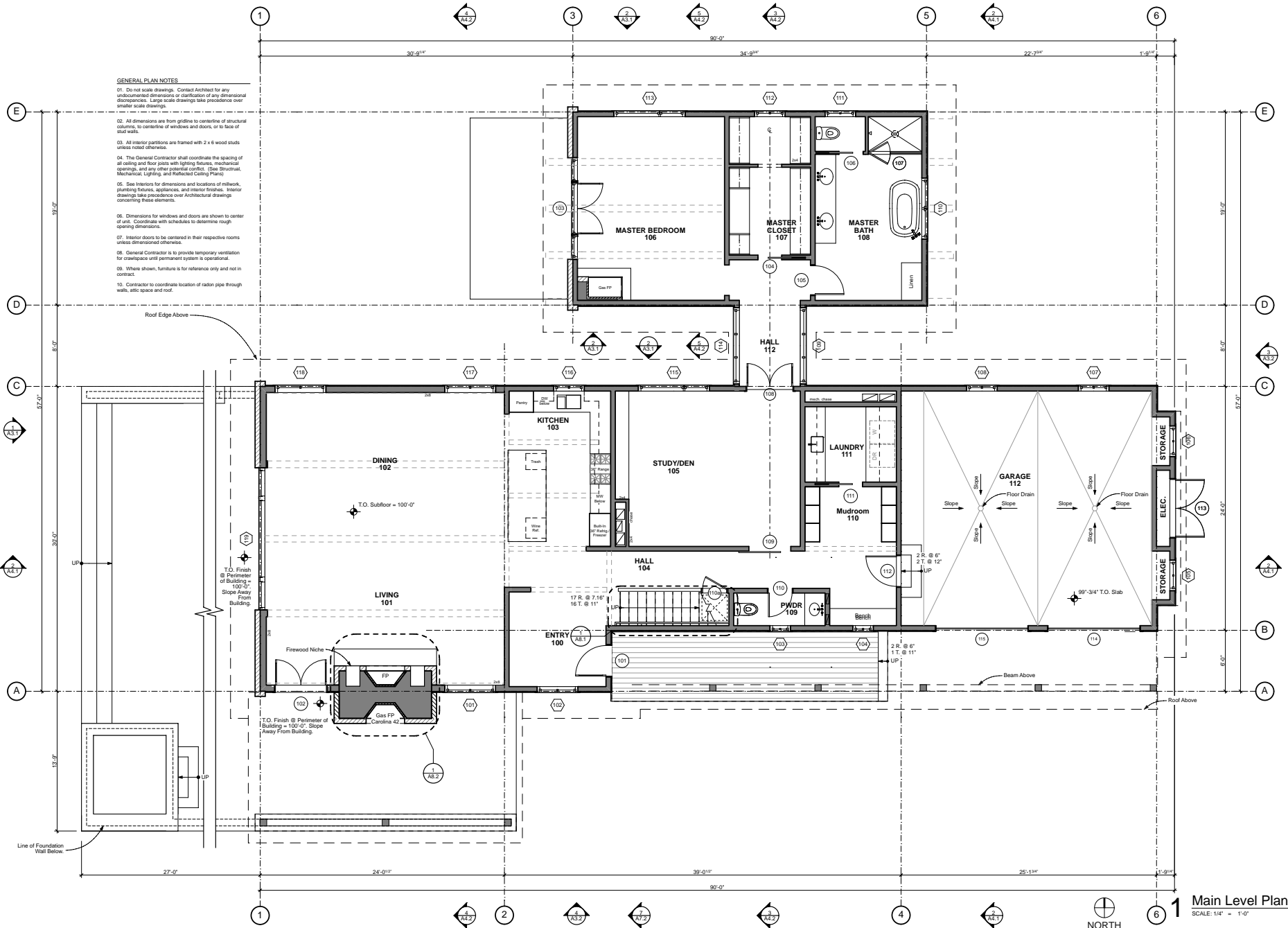
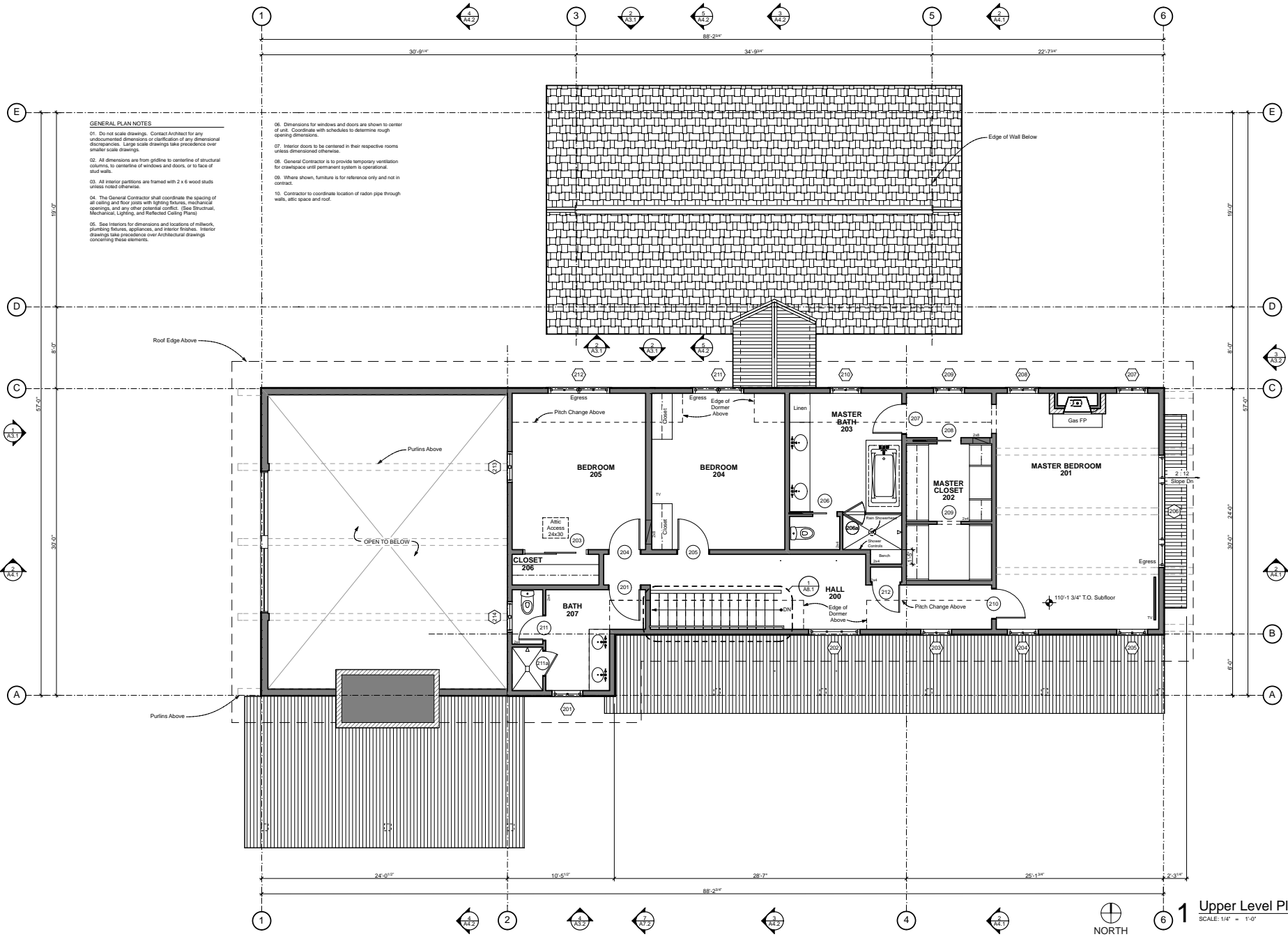


**GENERAL PLAN NOTES**

01. Do not scale drawings. Contact Architect for any undocumented dimensions or clarification of any dimensional discrepancies. Large scale drawings take precedence over smaller scale drawings.
02. All dimensions are from gridline to centerline of structural columns, to centerline of windows and doors, or to face of stud walls.
03. All interior partitions are framed with 2 x 6 wood studs unless noted otherwise.
04. The General Contractor shall coordinate the spacing of all ceiling and floor joists with lighting fixtures, mechanical openings, and any other potential conflict. (See Structural, Mechanical, Lighting, and Reflected Ceiling Plans)
05. See Interiors for dimensions and locations of millwork, plumbing fixtures, appliances, and interior finishes. Interior drawings take precedence over Architectural drawings concerning these elements.
06. Dimensions for windows and doors are shown to center of unit. Coordinate with schedules to determine rough opening dimensions.
07. Interior doors to be centered in their respective rooms unless dimensional otherwise.
08. General Contractor is to provide temporary ventilation for crawlspace until permanent system is operational.
09. Where shown, furniture is for reference only and not in contract.
10. Contractor to coordinate location of radon pipe through walls, attic space and roof.



**1 Main Level Plan**  
SCALE: 1/4" = 1'-0"



**GENERAL PLAN NOTES**

01. Do not scale drawings. Contact Architect for any undocumented dimensions or clarification of any dimensional discrepancies. Large scale drawings take precedence over smaller scale drawings.
02. All dimensions are from gridline to centerline of structural columns, to centerline of windows and doors, or to face of stud walls.
03. All interior partitions are framed with 2 x 6 wood studs unless noted otherwise.
04. The General Contractor shall coordinate the spacing of all ceiling and floor joists with lighting fixtures, mechanical openings, and any other potential conflict. (See Structural, Mechanical, Lighting, and Reflected Ceiling Plans)
05. See Interiors for dimensions and locations of millwork, plumbing fixtures, appliances, and interior finishes. Interior drawings take precedence over Architectural drawings concerning these elements.
06. Dimensions for windows and doors are shown to center of unit. Coordinate with schedules to determine rough opening dimensions.
07. Interior doors to be centered in their respective rooms unless dimensioned otherwise.
08. General Contractor is to provide temporary ventilation for crawlspaces until permanent system is operational.
09. Unless shown, furniture is for reference only and not in contract.
10. Contractor to coordinate location of radon pipe through walls, attic space and roof.

**Lodges at Four Pines**  
Teton Village, Wyoming

Issue/Revision Date	Issue/Revision Description	Checked By	Drawn By

**1 Upper Level Plan**  
SCALE: 1/4" = 1'-0"

**A2.2**

13K450

Checked By: MB  
Drawn By: FB