

REVISIONS

Date Description



© COPYRIGHT 2009 - JLF & ASSOCIATES, INC.

140 EAST MAIN STREET, SUITE A, BOZEMAN, MONTANA 59715
MT 406.587.8888 FAX 406.587.8807 WY 406.733.9021
WWW.JLFARCHITECTS.COM

JLF & ASSOCIATES, INC.
ARCHITECTS AND PLANNERS

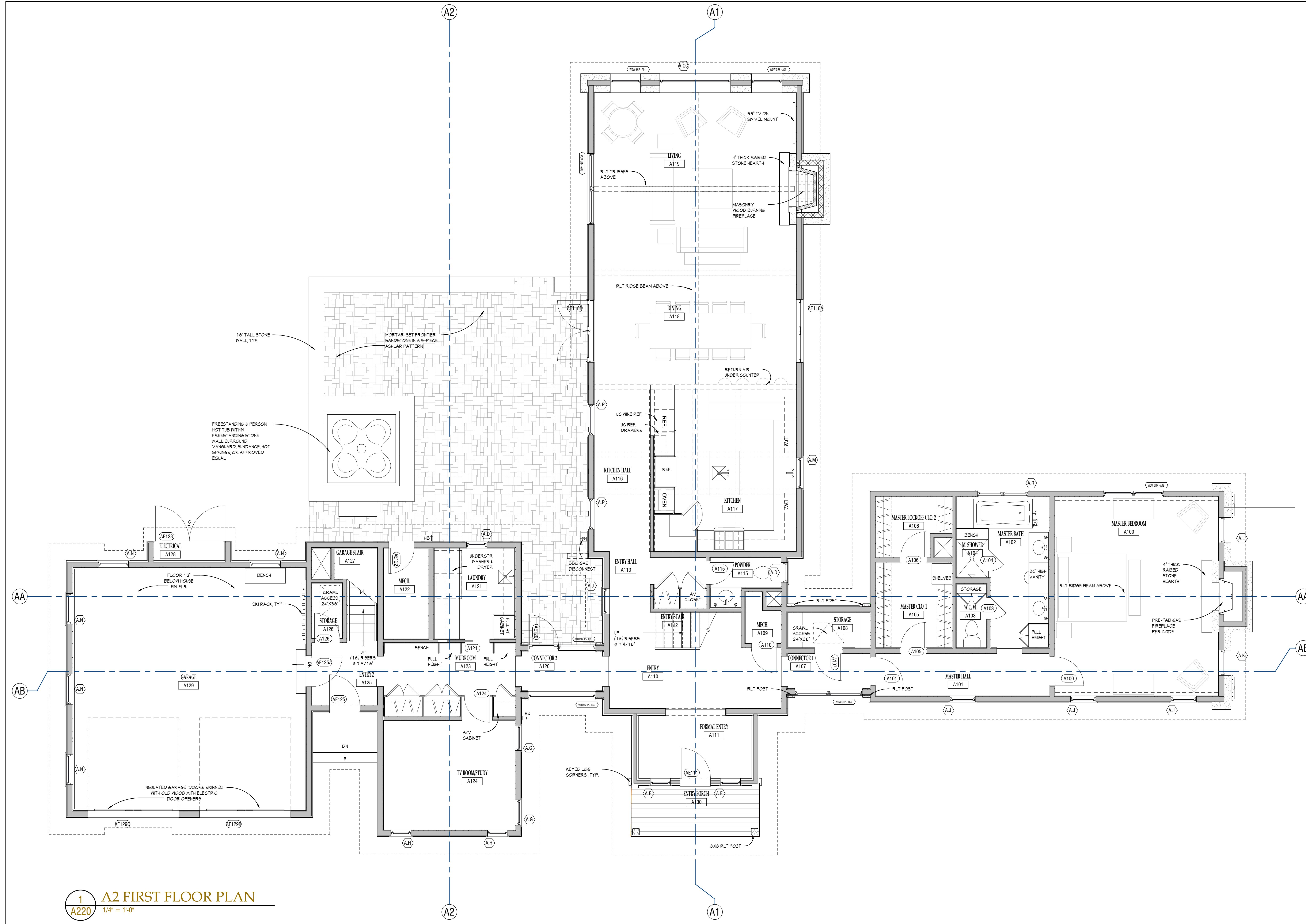
JOB NO: 046

CABIN A2 FIRST FLOOR PLAN

SSCII

A220

THE NORTH CABINS AT SHOOTING STAR
Jackson, Wyoming



1 A2 FIRST FLOOR PLAN
A220 1/4" = 1'-0"

REVISIONS

Date Description



© COPYRIGHT 2009 - JLF & ASSOCIATES, INC.

140 EAST MAIN STREET, SUITE A, BOZEMAN, MONTANA 59715
MT 406.587.8888 FAX 406.587.8807 WY 406.733.9021
WWW.JLFARCHITECTS.COM

JLF & ASSOCIATES, INC.
ARCHITECTS AND PLANNERS

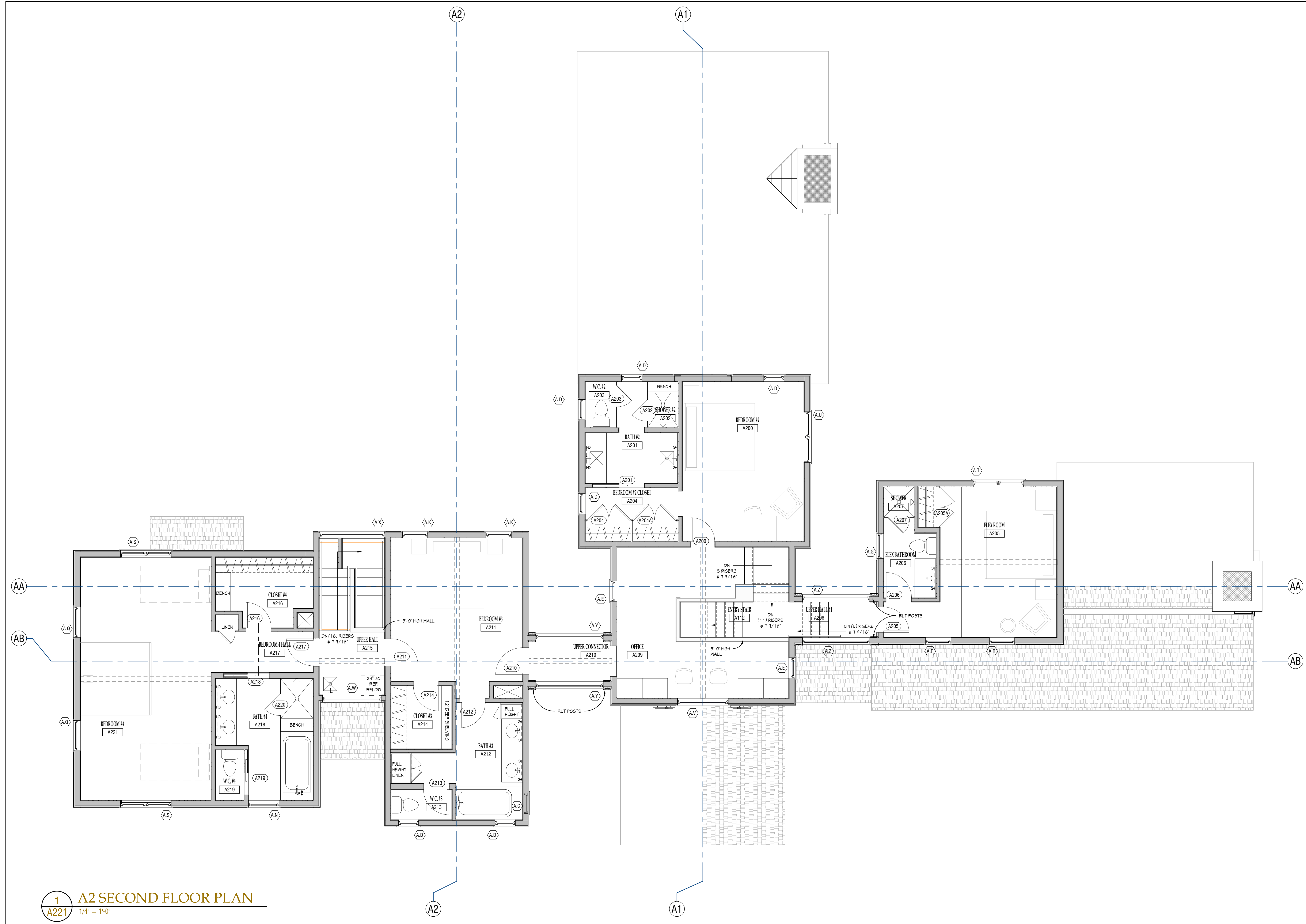
JOB NO: 046

CABIN A2
SECOND FLOOR
PLAN

SSCII

A221

THE NORTH CABINS AT SHOOTING STAR
Jackson, Wyoming



1 A2 SECOND FLOOR PLAN
A221 1/4" = 1'-0"